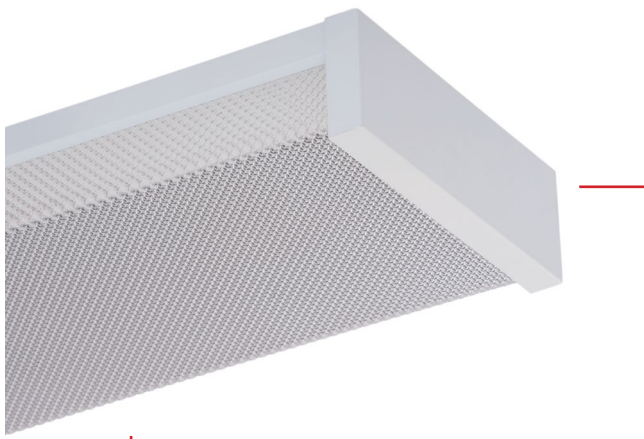


SURFACE MOUNT LUMINAIRES

ETA



Approximate Dimensions:

Width: 214 mm

Length: 660 mm

General Data:

Construction:

Body Cold Formed Sheet Metal with White Epoxy Powder Paint

Diffuser Thermo formed PMMA Triangular formed Prismatic Diffuser

Lamp Holders Positive Action Rota-lock

Ballast Available with low loss Magnetic or high Efficiency Electronic

IP Rating IP20

Typical

Applications:

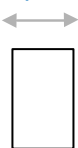
Indoor lighting Office's

applications Schools

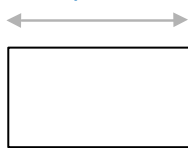
Laboratories

Front View:

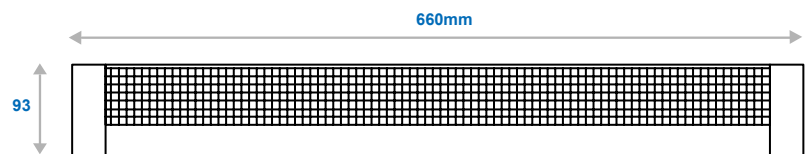
1 Lamp - 73mm²



Lamp - 214mm

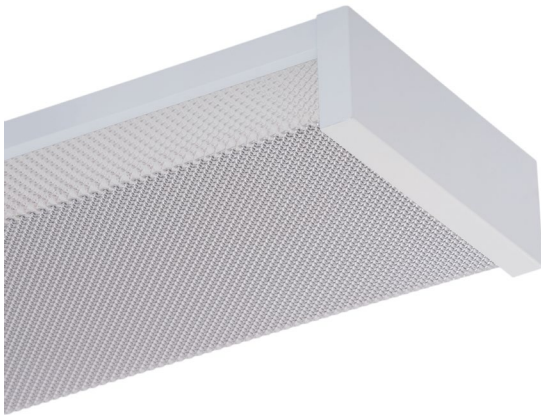


Side View:



SURFACE MOUNT LUMINAIRES

ETA



Options:

- .../CCG (Magnetic Ballast)
- .../ECG (Electronic Ballast)
- .../ECG-DIM (Electronic Dimmable Ballast)
- .../ECG-EMG (Electronic Ballast with emergency back-up)

Product Information:

Product Code	LampWatt's	H (mm)	L (mm)	W (mm)	(Kg)
ETA-118	18W	100	592	292	3,2
ETA-218	2x 18W	100	492	592	5,2
ETA-136	36W	100	592	592	5,5
ETA-236	2x 36W	100	1192	292	5,7
ETA-336	58W	100	1192	492	9,0
ETA-436	2x 58W	100	1192	592	9,5

Complete your Project:

Please select the items you require and we will be in touch

Cables and Wires:

Indoor
Outdoor
General
Other
Let an ACTOM
Specialist Contact you

Lighting:

Indoor
Outdoor
General
Other
Let an ACTOM
Specialist Contact you

Transformers (Distribution):

Indoor
Outdoor
General
Other
Let an ACTOM
Specialist Contact you

Accessories:

Indoor
Outdoor
General
Other
Let an ACTOM
Specialist Contact you

Specific Information:

Address: 4 Branch Road, Germiston 1401, P.O. Box 678, Germiston 1400

For more Information on this Product Please Send us the Following

Product Information:

Product Name:

Quantity:

Project Name:

Date the Product is required:

Your Contact Information:

Name and Surname:

Company:

Email:

Phone Number:

Province:

Thank You

For having a Look at this Product

Please send this PDF back to us with all your Information

Scan the QR Code to visit our Website:

